

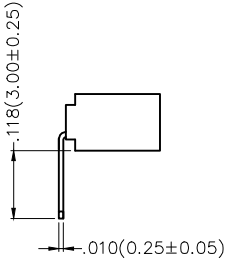
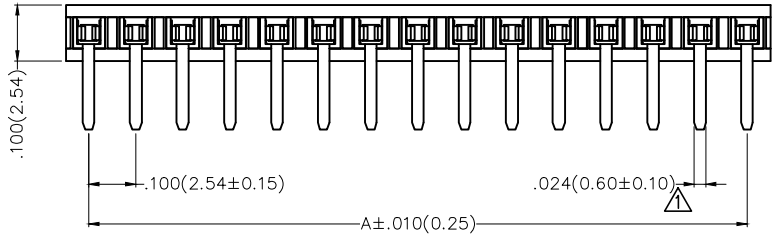
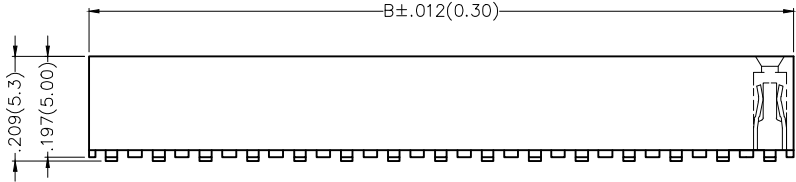
1 2 3 4 5 6 7 8

REV	LOCATIONS	DESCRIPTION	DATE	REVISER	APPD
1	△	Size changes	07/SEP/22	MATT	CHERRY

SPECIFICATIONS

Electrical
 Current Rating: 3A AC(rms)/DC
 Voltage Rating: 250V AC(rms)/DC
 Contact Resistance: 20 mΩ Max
 Insulation Resistance: 1000 MΩ Min
 Withstanding Voltage: 500V AC r.m.s
 Temperature Range-Operating: -40°C~+85°C

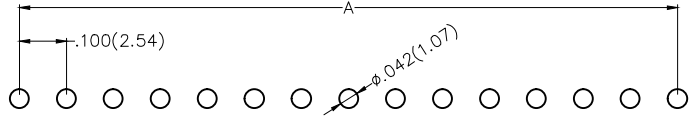
Material and Plating
 Housing: Glass Filled Polyester (UL 94V-0)
 Contact Pin: Phosphor bronze
 Plating: Gold Plated/Selective gold on contact area, tin on tail




Ordering Information

FFH 254 57 — S XX B X XX X K6 X
 1 2 3 4 5 6 7 8 9 10 11

1 Category FFH-Female Header	2 Series Number 254-Pitch2.54mm	3 Distinction No. 57	4 Row Option S-Single row	5 Circuits XX	6 Entry Angle B-90° Angle
7 Plating 1-Gold Plated 3-Selective gold on contact area, tin on tail	8 Thickness of Plating 00-Gold Flash 05-5µ" Custom plate available	9 Material-Resin 1-PBT 4-PA6T	10 Color-Resin K6-Black	11 Packaging L-Tube K-Tray	



Recommended P.C.Board Layout

THIRD ANGLE PROJECTION	GENERAL TOLERANCES (UNLESS SPECIFIED)		APPROVE BY FRANK	DATE 04/JAN/17	PART NO. FFH25457-SXXBXXXXK6X	ITEM NO. FFH25457	 Leader Of Industry
	DESIGN UNITS Inch (metric)	X.±.012(0.30) X.±5' X.X±.008(0.20) .X'±2'	CHECKED BY CHERRY	DATE 04/JAN/17	TITLE Board to Board (Female Header) Pitch 2.54mm 90° Angle (DIP)		
SCALE 5:1	SIZE A4	X.XX±.006(0.15) .XX'±1' X.XXX±.004(0.10) .XXX'±0.5'	DRAWN BY KATE	DATE 04/JAN/17	THIS DRAWING CONTAINS INFORMATION THAT IS PROPRIETARY TO TXGA INDUSTRIAL ELECTRONICS(S.Z)CO.,LTD AND SHOULD NOT BE USED WITHOUT WRITTEN PERMISSION		

1 2 3 4 5 6 7 8

1 2 3 4 5 6 7 8

REV	LOCATIONS	DESCRIPTION	DATE	REVISER	APPD

Circuits (n)	Part No.	Dimensions(in/mm)		Circuits (n)	Part No.	Dimensions(in/mm)	
		A	B			A	B
3	FFH25457-S03BXXXXK6X	.200(5.08)	.320(8.12)	22	FFH25457-S22BXXXXK6X	2.100(53.34)	2.220(56.38)
4	FFH25457-S04BXXXXK6X	.300(7.62)	.420(10.66)	23	FFH25457-S23BXXXXK6X	2.200(55.88)	2.320(58.92)
5	FFH25457-S05BXXXXK6X	.400(10.16)	.520(13.20)	24	FFH25457-S24BXXXXK6X	2.300(58.42)	2.420(61.46)
6	FFH25457-S06BXXXXK6X	.500(12.70)	.620(15.74)	25	FFH25457-S25BXXXXK6X	2.400(60.96)	2.520(64.00)
7	FFH25457-S07BXXXXK6X	.600(15.24)	.720(18.28)	26	FFH25457-S26BXXXXK6X	2.500(63.50)	2.620(66.54)
8	FFH25457-S08BXXXXK6X	.700(17.78)	.820(20.82)	27	FFH25457-S27BXXXXK6X	2.600(66.04)	2.720(69.08)
9	FFH25457-S09BXXXXK6X	.800(20.32)	.920(23.36)	28	FFH25457-S28BXXXXK6X	2.700(68.58)	2.820(71.62)
10	FFH25457-S10BXXXXK6X	.900(22.86)	1.020(25.90)	29	FFH25457-S29BXXXXK6X	2.800(71.12)	2.920(74.16)
11	FFH25457-S11BXXXXK6X	1.000(25.40)	1.120(28.44)	30	FFH25457-S30BXXXXK6X	2.900(73.66)	3.020(76.70)
12	FFH25457-S12BXXXXK6X	1.100(27.94)	1.220(30.98)	31	FFH25457-S31BXXXXK6X	3.000(76.20)	3.120(79.24)
13	FFH25457-S13BXXXXK6X	1.200(30.48)	1.320(33.52)	32	FFH25457-S32BXXXXK6X	3.100(78.74)	3.220(81.78)
14	FFH25457-S14BXXXXK6X	1.300(33.02)	1.420(36.06)	33	FFH25457-S33BXXXXK6X	3.200(81.28)	3.320(84.32)
15	FFH25457-S15BXXXXK6X	1.400(35.56)	1.520(38.60)	34	FFH25457-S34BXXXXK6X	3.300(83.82)	3.420(86.86)
16	FFH25457-S16BXXXXK6X	1.500(38.10)	1.620(41.14)	35	FFH25457-S35BXXXXK6X	3.400(86.36)	3.520(89.40)
17	FFH25457-S17BXXXXK6X	1.600(40.64)	1.720(43.68)	36	FFH25457-S36BXXXXK6X	3.500(88.90)	3.620(91.94)
18	FFH25457-S18BXXXXK6X	1.700(43.18)	1.820(46.22)	37	FFH25457-S37BXXXXK6X	3.600(91.44)	3.720(94.48)
19	FFH25457-S19BXXXXK6X	1.800(45.72)	1.920(48.76)	38	FFH25457-S38BXXXXK6X	3.700(93.98)	3.820(97.02)
20	FFH25457-S20BXXXXK6X	1.900(48.26)	2.020(51.30)	39	FFH25457-S39BXXXXK6X	3.800(96.52)	3.920(99.56)
21	FFH25457-S21BXXXXK6X	2.000(50.80)	2.120(53.84)	40	FFH25457-S40BXXXXK6X	3.900(99.06)	4.020(102.10)

A

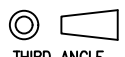

B

C

D

E

F

 THIRD ANGLE PROJECTION	GENERAL TOLERANCES (UNLESS SPECIFIED)		APPROVE BY FRANK	DATE 04/JAN/17	PART NO. FFH25457-SXXBXXXXK6X	ITEM NO. FFH25457	 Leader Of Industry
	DESIGN UNITS Inch (metric)	X.±.012(0.30) X.X±.008(0.20) X.XX±.006(0.15) X.XXX±.004(0.10)	X.±5° .X°±2° .XX'±1" .XXX'±0.5'	CHECKED BY CHERRY	DATE 04/JAN/17	TITLE Board to Board (Female Header) Pitch 2.54mm 90° Angle (DIP)	
SCALE 5:1	SIZE A4	DRAWN BY KATE		DATE 04/JAN/17	THIS DRAWING CONTAINS INFORMATION THAT IS PROPRIETARY TO TXGA INDUSTRIAL ELECTRONICS(S.Z)CO.,LTD AND SHOULD NOT BE USED WITHOUT WRITTEN PERMISSION		

1 2 3 4 5 6 7 8